



ACTIVITY SHEET



Mariana Castillo Deball:
Between making and
knowing something

WELCOME

This guide has been created for you to read as you walk through the exhibition. If you need any help, find someone with a yellow badge.



GALLERY 4

In the responsive space there are lots of displays that show how people have been creative during lockdown.

How long do you think the black rope is?

Ask someone with a yellow badge for the answer!

FINISH

START

GALLERY 1

GALLERY 2+3

FIND OUT MORE ABOUT THE EXHIBITION OVER THE PAGE

The ceramic pots in this space have all been lovingly hand made by the artist, using a type of clay called red stoneware.

Can you count how many ceramic pots are in the gallery?



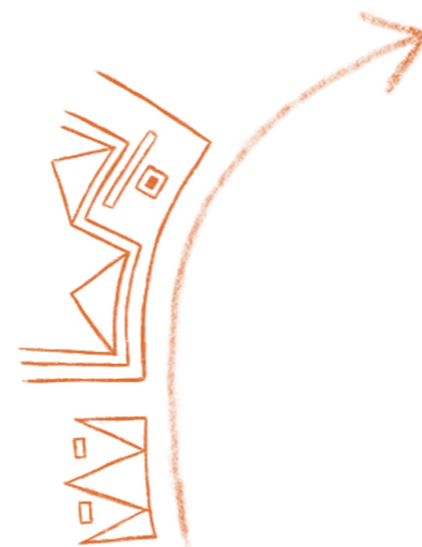
The antique display cases used here come from Oxford University's Museum of Natural History.

Look through them, can you find the image of anthropologist and explorer, Matilda Coxe Stevenson?



ABOUT THE ARTIST

Mariana Castillo Deball is an artist from Mexico City. She lives in Berlin in Germany. Mariana creates installations using ceramics and textiles that explore the role objects play in our understanding of communities living all over the world.



DID YOU KNOW...

Matilda Coxe Stevenson was the first female anthropologist to work for the American government to study people and communities in New Mexico.

ABOUT THE SHOW



Mariana enjoys doing lots of research for her exhibitions. For her show at Modern Art Oxford, Mariana shares stories from female anthropologists and creative artists and makers from Zuni communities, who live by the Zuni River Valley in New Mexico, in America.

Anthropology is the study of human beings and it helps us to understand how people from different communities all over the world have lived their lives in the past and how people continue to live today.

Mariana is interested in the stories we learn about other communities when visiting museums. She spends a lot of time looking at displays and archives to see how museum collections might be shaping our understanding of the world.

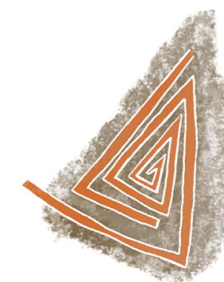


WHAT NEXT?

Visit the Responsive Space in the gallery to see what you can find hidden in our archaeological tank.

Ask someone with a yellow badge to help you!

ACTIVITY:



In your activity pack, there are a selection of images of pots and patterns from the exhibition. Can you find them in the gallery?

You can use the space below to sketch your favourite:

