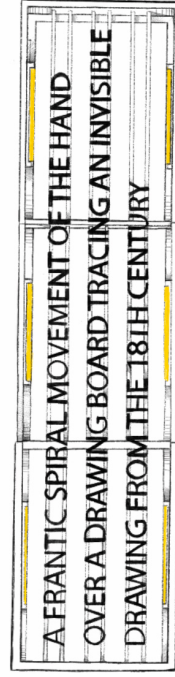




This guide has been created for you to read as you walk through the exhibition. If you need any help, find someone with a yellow badge.



*Antelope - Ghost maquette for the Fourth Plinth, 2021*

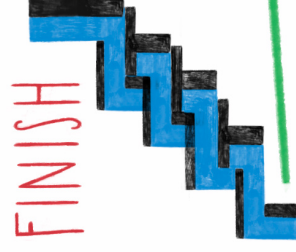
This artwork is a maquette. A maquette is small practice sculpture or sketch that an artist makes before starting on the final and larger artwork. This sculpture was made using a 3D Printer.



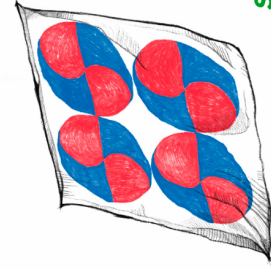
*Nyau Cinema Rules, 2013*

Samson created 10 important rules to use as a guide while making his short films.

Can you spot how he has used these rules in the films displayed in this space?



FIND OUT MORE ABOUT THE EXHIBITION OVER THE PAGE



*Drawing in the 18th Century (Synopsis), 2021*

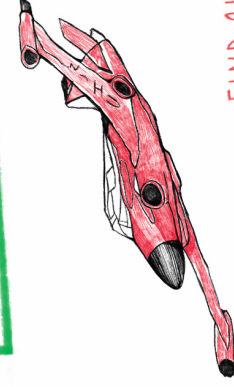
This large, illuminated artwork is inspired by the cinema signs made for Hollywood films that Samson used to see as a child in Malawi.

The writing describes one of the artist's own films which you can also see in this exhibition!

*Sanguinetti Cell, 2021*

The drawings in this room are traced from images the artist found in a library.

What would you choose to draw on a wall?



## ACTIVITY SHEET

SAMSON KAMBALU

# LIBERIA



MODERN ART  
OXFORD

30 Pembroke Street  
OX1 1BP  
+44 (0) 1865 722733  
www.modernartoxford.org.uk





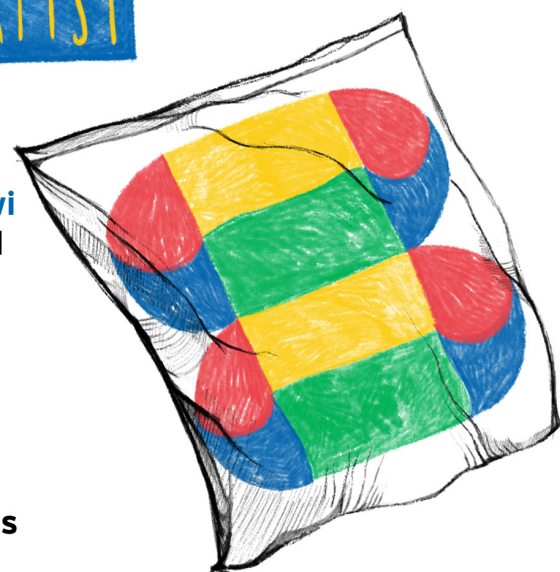
# START

## ABOUT THE ARTIST

Samson Kambalu was born in **Malawi** in sub-Saharan Africa. He lives and works in Oxford.

Samson is an artist, author and Professor at the Ruskin School of Art, University of Oxford.

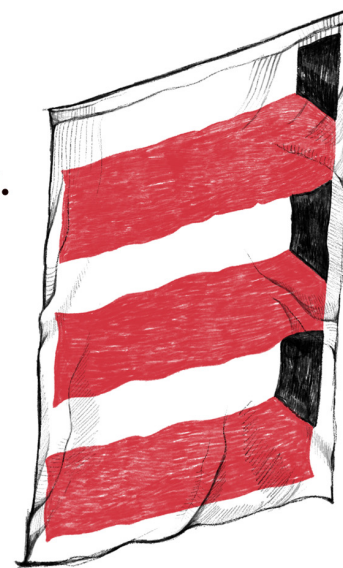
Samson creates imaginative, colourful artworks that encourage us to talk about experiences of life, in thoughtful and playful ways.



## CAN YOU SEE...

Samson has created his colourful Beni flags by mixing different shapes and colours from flags from around the world.

Can you imagine which countries these flags could be for?



## ABOUT THE EXHIBITION

One of Samson's biggest inspirations is **Nyau culture**, a secret society in Malawi that celebrates creativity and play as an important part of life.

Samson has made two large elephants for his show, inspired by the lively dances and mask wearing that is part of Nyau.

Samson also makes short films, inspired by childhood memories of watching films on old projectors. The action shots were often edited together to make them more exciting to watch.

Samson uses this imaginative idea to make his own **Nyau Cinema**.

## ACTIVITY:

Samson has created playful rules to encourage us to make our own Nyau Cinema.

Can you find his films in the gallery?

Here are some helpful steps to get started:

1. Watch Samson's films in the gallery for inspiration.
2. Look around you... is there anything that inspires you to move in a particular way? Is there an object you can use as a prop?
3. Start your performance! Ask someone to join in with your actions ...
4. Experiment in different spaces or book a ticket for the Creative Space so you can practice your performances on the big screen.



## DID YOU KNOW...

The two large elephant sculptures in the gallery are covered in Oxford University gowns.

Can you guess how many gowns are on each elephant?

## DON'T FORGET...

If you'd like to visit the Creative Space ask a friendly member of our team to help you book a free ticket.

