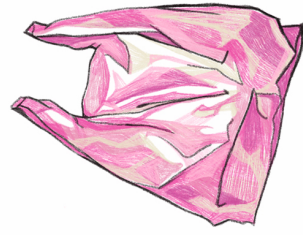


# WELCOME

This guide has been created for you to read as you walk through the exhibition.

If you need any help, find someone with a yellow badge.

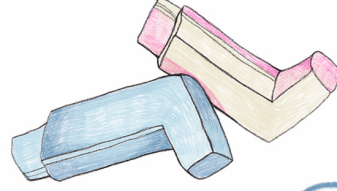


## MIDDLE GALLERY 1

Many of the artworks in this space contain images of objects that the artist uses everyday.

What objects do you use every day that you could use to create an artwork?

Draw or write your objects in the space below:



## PIPER GALLERY

Jesse often chooses to use plastic or steel in their work. Both those materials are affordable, hard-wearing and very commonly used.

What other materials can you see used in this space?

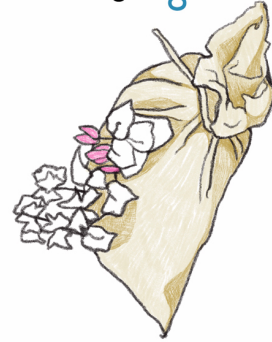
## FINISH

## START

## UPPER GALLERY

*Gravity Road, 2020*  
Steel, jute, sand, soil, flowers, elastic bandage, metal coating.

Can you draw the installation in the space on the map?

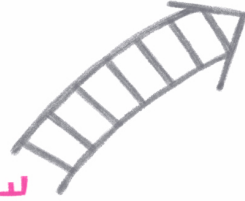


## MIDDLE GALLERY 2

Jesse has turned this gallery into a chapel, taking inspiration from religious figures and paintings.



FIND OUT MORE ABOUT THE EXHIBITION OVER THE PAGE



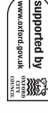
**JESSE DARLING**  
**NO MEDALS**  
**NO RIBBONS**

ACTIVITY SHEET

MODERN ART  
OXFORD



30 Pembroke Street  
OX1 1BP  
+44 (0) 1865 722733  
www.modernartoxford.org.uk



Designed by Jumana Holkan and Sara Lowes  
jumanaholkan.com



# ABOUT THE ARTIST

**Jesse Darling** is an artist from Oxford, who lives and works in Berlin, Germany.

Jesse uses ordinary, everyday objects such as plastic carrier bags to create sculptures and installations that change how we think about these objects and our relationships with them.

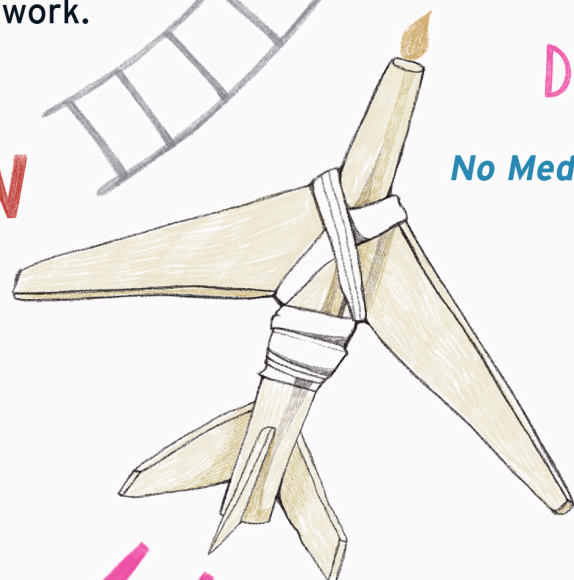
Jesse encourages us to appreciate how fragile and uncertain things can be, from buildings to our bodies and our lives together. Even though they might appear big and strong, Jesse finds the fragile nature of these things as something important we all have in common and uses this as inspiration to create their work.

# ABOUT THE SHOW

This show includes many artworks that Jesse has made over the last 10 years.

The largest artwork in the show is called **Gravity Road**. Gravity Road is giant steel sculpture that looks a bit like a broken rollercoaster or a huge skeleton. This giant sculpture is named after a rollercoaster, which was built in America in 1827.

Jesse uses lots of steel and plastic to create their work, and makes aeroplanes, horses, wings and lions, inspired by famous myths, fictional tales and personal experiences.



## CAN YOU SEE...

There is a little bird in each of the galleries.

**Can you find them?**

How many are there all together?

## DID YOU KNOW...

**No Medals No Ribbons** is Jesse's biggest exhibition so far.

Can you guess how many artworks there are?

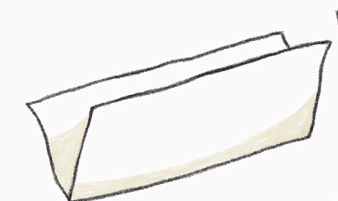
**Find someone with a yellow badge for the answer.**

# ACTIVITY

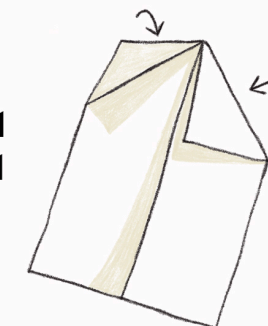
In the gallery you can see many origami aeroplanes made from aluminium paper.

You can make your own paper plane by following these simple instructions:

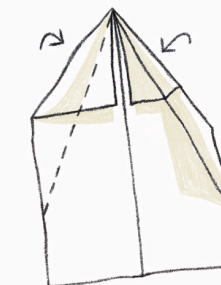
**1-** Fold an A4 piece of paper in half, lengthways.



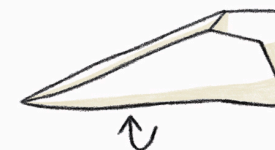
**2-** Flatten the paper out again and fold the top two corners toward the crease in the centre.



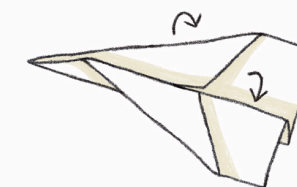
**3-** Fold the angled top edges toward the centre crease again.



**4-** Use the centre crease as a guide to fold the paper.



**5-** Fold the angled sides towards the centrefold to make the wings.



Once you have practiced making one with regular paper, try using different materials to make your aeroplanes, such as foil, tissue paper or even this activity sheet.

**You can find more materials to make your planes alongside other activities in the Creative Space.**

