



Modern Art Oxford

Arriving at Modern Art Oxford

You can enter from Pembroke Street or the Yard entrance. The Pembroke Street entrance has automatic glass doors with a reflective surface. They open slowly. Inside, you'll find 7 steps leading up to the ground floor and visitor welcome desk. If you turn left you will find a small lift. Call the lift by pressing the  button.

Most flooring is hardwood. If the texture changes, you will see  on the map.

Social Space

The welcome desk is on the ground floor and is a good place to ask questions or get assistance during your visit. The 'You Are Here' symbol on the back of this map marks the welcome desk to help you find your way.

The gallery shop includes brightly coloured shelving with displays and lockers you can use. **The social space** has soft seating with vitrines and touch screens to access our website and archive. There is also a co-working desk you are welcome to use.

You will find toilets on this floor (through the Ground Floor gallery) and stairs down to our Club Together Café with an accessible toilet and baby change. Pick up communication cards at the welcome desk.

Visiting the Upper Galleries

Opposite the welcome desk, a sliding door (marked with a green "Please donate" sticker) leads to 19 steps up to the Upper Galleries. The door slides to the right and there are handrails on both sides.

If you prefer to use the lift, you can find it to the left of the main entrance to the gallery. To call the lift, press the up or down arrow button next to the doors.



Ground Floor Gallery & Studio

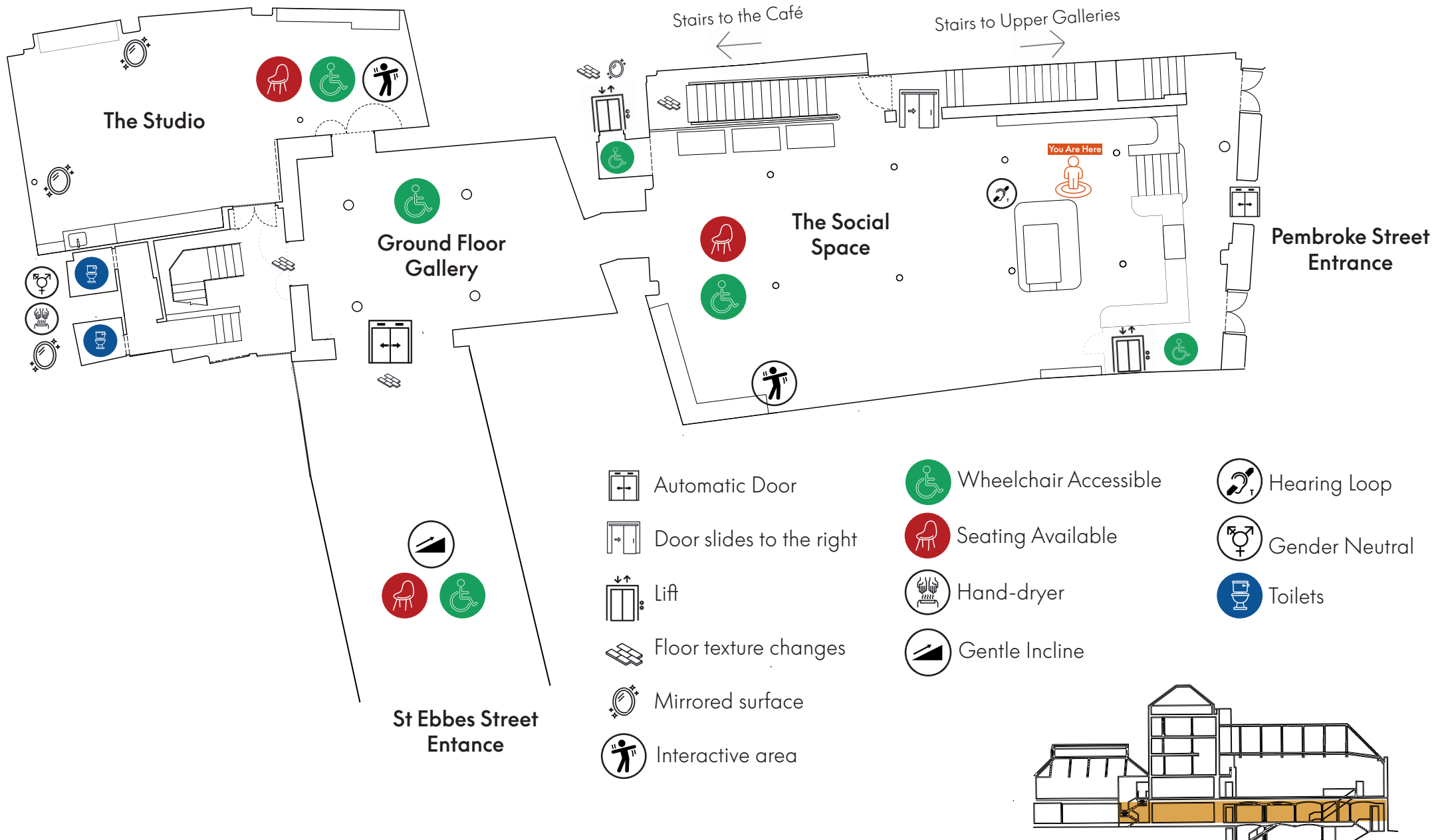
From the Social Space, you can enter the Ground Floor Gallery through an open door next to the co-working space.

If you enter from St Ebbes Street, you'll walk up a gentle incline and through the Yard. Automatic sliding doors take you into the Ground Floor Gallery. To your right is an open door into the Social Space; directly ahead is a glass door into the Studio. The glass door to your left leads to the toilets and the staircase used to exit the Upper Galleries.

The Ground Floor Gallery is currently showing Platform Graduate Award: *This is Really Happening*. It is a group exhibition featuring multiple sculptures and artworks displayed on both the walls and the floor. Please do not touch these artworks. One of the artwork from this show is in the Social Space.

The Studio is a spacious, light area with a central workshop table and creative materials for you to use. A gentle animation is projected onto the walls. Costumes are available for dressing up — you can dress each other or one of our mannequins. Mirrors on the wall let you see your creations. You can also design your own tarot cards and add them to our display wall.

The Ground Floor



Modern Art Oxford

The Upper Galleries

Our gallery spaces are supported by our friendly Visitor Engagement team, who are here to answer questions and make your visit as comfortable as possible. You can recognise them by the lanyards they wear around their necks. Please feel free to ask them for any assistance, including accessibility support.

The space is generally quiet, though you may hear soft sounds from nearby artworks or other visitors. Lighting levels vary. Currently on display, Suzanne Treister: *Prophetic Dreaming*. Please ask a member of staff for large print transcripts

Upper Gallery 1 is our largest space, with a very high ceiling and skylights. The lighting is mostly natural daylight, with some additional artificial lighting. For this exhibition, Upper Gallery 1 has been divided into two rooms.

The first room is smaller and painted a dark purple, with many artworks displayed on the walls. There are two vitrines in the centre show smaller works.

The second room has pale green walls. Here you'll find video works (which can be watched with headphones or read using subtitles), as well as prints and paintings on the walls, prints hanging from the ceiling and costumes displayed in the centre of the room. Please do not touch any of these artworks. There is an interactive artwork in the middle of the room. You can use the retro Apple computer to explore a virtual world created by Suzanne Treister.

Upper Gallery 2 includes two smaller rooms with low ceilings, both accessed via a gentle ramp. A handrail is on your right as you enter the first room. The lighting is artificial.

The first space is light, with artworks on the walls and a video. The video includes fast-moving and flashing images. You can use the headphones provided to listen to the audio. Noise levels are variable as sound from other videos can be heard.

The second, smaller room is slightly dimmer, with blue-painted walls. It features a video (11 minutes long) with noise playing out loud. There are artworks on the walls. There is a short, gentle ramp leading into this room.

In the main space, the closed double doors lead to a staircase returning to the ground floor. The open doorway to the right takes you to Upper Gallery 3.

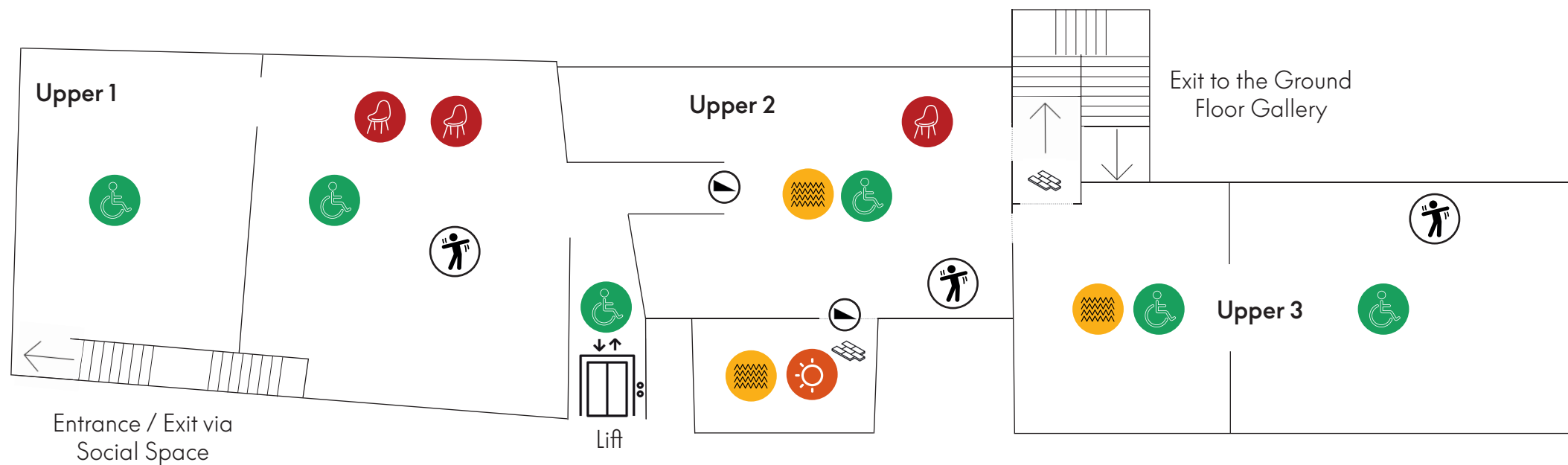
Upper Gallery 3 is a medium-sized space with high ceilings and skylights. For this exhibition, it is divided into two areas by a wall with a circular opening in the centre. Noise levels can vary, as audio from nearby video works may be heard. Lighting is mostly natural, with some additional artificial lighting. This gallery includes artworks on the walls, vitrines and video works. One of the artworks is a book you can look through while listening to accompanying audio. There are two videos with no subtitles, please ask a member of staff for our large print transcripts.

Closed double doors in this space lead to stairs returning to the ground floor (push to open). There are 19 stairs, with a handrail on either side.

The Upper Galleries



Please ask a member of staff for a portable gallery stool you can take with you around the exhibitions.



Seating available



Wheelchair accessible



Brighter lighting



Floor texture changes



Dimmer lighting



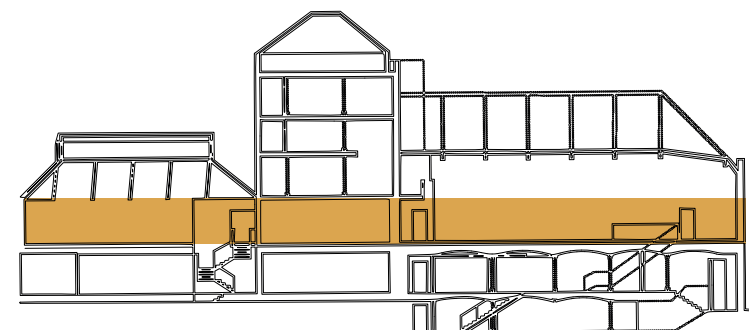
Variable noise levels



Interactive area



Gentle ramp



Modern Art Oxford

The Basement

In the basement you can find our Club Together Café and toilets including a gender neutral, accessible toilet with baby change facilities.

You can access our Club Together Café in three ways:

- As you enter from Pembroke street, look for the cafe entrance to your right. This entrance has 9 steps down.
- Via the lift, from the ground floor, look to your left from the welcome desk as you face the Upper Galleries.
- Via the stairs, from the ground floor, look to the left of the main entrance to the Upper Galleries.

The Café is a brightly painted space with low ceilings and artist-designed furniture in the shape of hands. Spotlighting creates soft pools of colour and casts shadows from the furniture onto the floor.

Light music will be playing in the background. Noise levels may increase at lunchtime (12–2pm).

Menus are available on the tables. Place your order at the counter, and your food will be brought directly to you. You're also welcome to sit upstairs in the social space. If you have any allergies or dietary needs, please let one of our friendly Café staff know.

Toilets and baby change facilities are located behind the hand-shaped bench at the back of the room. Press the button to open the sliding door. The door will open automatically on your way out.

To go straight up to the Upper galleries from the Café use the lift and select floor 1, where you will come out into the back of Upper 1.

We'd love to hear your thoughts!

Let us know what you think of this sensory map and how we can make it better.
Email us at info@modernartoxford.org.uk.

Thanks for visiting – we hope to welcome you back soon.

The Basement

