

# Modern Art Oxford

---



---

**Venue Hire 2025 & 2026**





# About Modern Art Oxford

Modern Art Oxford is a leading contemporary art space with an international reputation for innovative and ambitious programming. Many world-famous artists have exhibited at the gallery during its nearly 60 year history including Robert Mapplethorpe (1984), Marina Abramović (1995, 2022), Yoko Ono (1997), Tracey Emin (2002), Jenny Saville (2012) and Anish Kapoor (2021).

Located in the heart of Oxford's vibrant city centre, the gallery plays a vital part in the rich cultural landscape of the city. With inspiration, creativity and community at the heart of what we do, our uniquely contemporary spaces, which have been recently revitalised due to a £2 million capital project, are ideal for any event. We'll help you to create a beautiful and bespoke experience, as well as advising on trusted suppliers to ensure a memorable time for all your guests.

By hosting your event at Modern Art Oxford you are helping us support artists and provide creative opportunities for everyone in Oxford. You may also wish to consider Corporate Membership to create a meaningful legacy locally and enjoy exclusive hire and hospitality benefits for you and your team.

We look forward to welcoming you and your guests to the gallery soon.



“We had such a special time celebrating our wedding at Modern Art Oxford. The events team were amazing during every step of the planning process and on the evening itself, which meant we could relax and enjoy the party. We have fantastic memories of the day and are so pleased we chose to celebrate at Modern Art Oxford.”

Alex & Sam, Wedding Reception







# The Ground Floor

Newly renovated, our Ground Floor is spacious and contemporary, featuring exposed brick walls and an industrial feel that adds character and warmth. With moveable furniture and a Welcome Desk that transforms into an evening bar, the Ground Floor is the perfect blank canvas for bespoke decorations and a distinctive, personalised space.

With access to top-of-the-range audio-visual equipment, flexible lighting arrangements, and a team of experienced staff, we've got everything you need for your event to flourish.

200	80	100
Standing	Seated Dinner	Seated Theatre-style

Price: From £3500 + VAT





# The Café

Step inside an artwork at our destination Café, designed by acclaimed British artist Emma Hart. Immerse yourself in vibrant pools of colour, where Hart's uniquely crafted tables, chairs, and stools glow in a breathtaking palette of 'Ibiza sunset' hues – the perfect backdrop to eat, drink, and celebrate.

From birthday dinners and corporate meetings to evening workshops and intimate musical events, the Café is a versatile space for gatherings of all kinds. With its own dedicated entrance from Pembroke Street, accessible toilets, and a fully equipped kitchen and bar on the lower ground floor, it's available as a standalone booking or part of full venue hire. The Café offers a unique and inspiring setting to connect with your creative community.

100	70
Standing	Seated

Price: From £1500 + VAT





# The Studio

By day, our Studio is a hub of learning. By night, it transforms into a dynamic space ready for your ideas to take shape. Whether it's a film screening, a workshop, or a creative brainstorming session, it's designed to inspire and adapt to your needs.

Equipped with state-of-the-art audio-visual technology, flexible lighting, and a variety of seating options, the Studio offers a polished yet creative setting, ready to bring your vision to life.

Looking for a space to celebrate your child's big day? The Studio is also available for children's birthday parties, offering a bright, flexible venue perfect for creative activities, games, and making memories. Our team can recommend trusted local entertainers and caterers to help you plan a stress-free celebration.

55	15	45
Standing	Seated Workshop	Seated Theatre-style

Full day/half day: From £1000 + VAT/ £500 + VAT





# The Yard

Created in 2002 by RIBA award-winning architects de Rijke Marsh Morgan, the Yard is a contemporary space that brings a unique atmosphere to every event. Ideal for intimate gigs, screenings, or as a private green room for larger events, the Yard offers an authentic and adaptable backdrop for any occasion. It also has its own direct entrance from St Ebbes Street.

240	100
Standing	Seated

Price: From £350 + VAT





# Creative Christmas

Looking for something a little different this festive season? Celebrate with a creative twist at Modern Art Oxford. Whether it's an art class, a hands-on workshop, a wine tasting, or a combination of all three, we offer memorable experiences that bring people together.

Let the unique atmosphere of our gallery spaces inspire creative thinking and bring your team together – book your Christmas party with us today!

Prices start from £25 per person.



# Curator-led Tours

Level up your event with a Curator-led tour of our gallery spaces. This intimate, in-depth experience invites your guests to hear directly from the experts, gaining behind-the-scenes insight into the artworks, artists and curatorial thinking that shape the show.

Spark conversation, deepen engagement and create a truly memorable occasion.

Subject to availability.  
Prices start from: £150





# Facilities

Our gallery spaces are available for hire Tuesday to Saturday from 6–11pm, Sundays from 4pm and all day and evening on Mondays, with some flexibility depending on your event and setup requirements. Alternative timings may be available depending on our programmatic commitments.

We offer a licensed bar, audio-visual equipment, and adaptable lighting options and are happy to recommend trusted suppliers for on-site catering, décor and bespoke event styling.

All our galleries and event spaces are fully accessible. If you have specific access requirements, just let us know – we’ll work with you to ensure everything is in place to meet your needs.

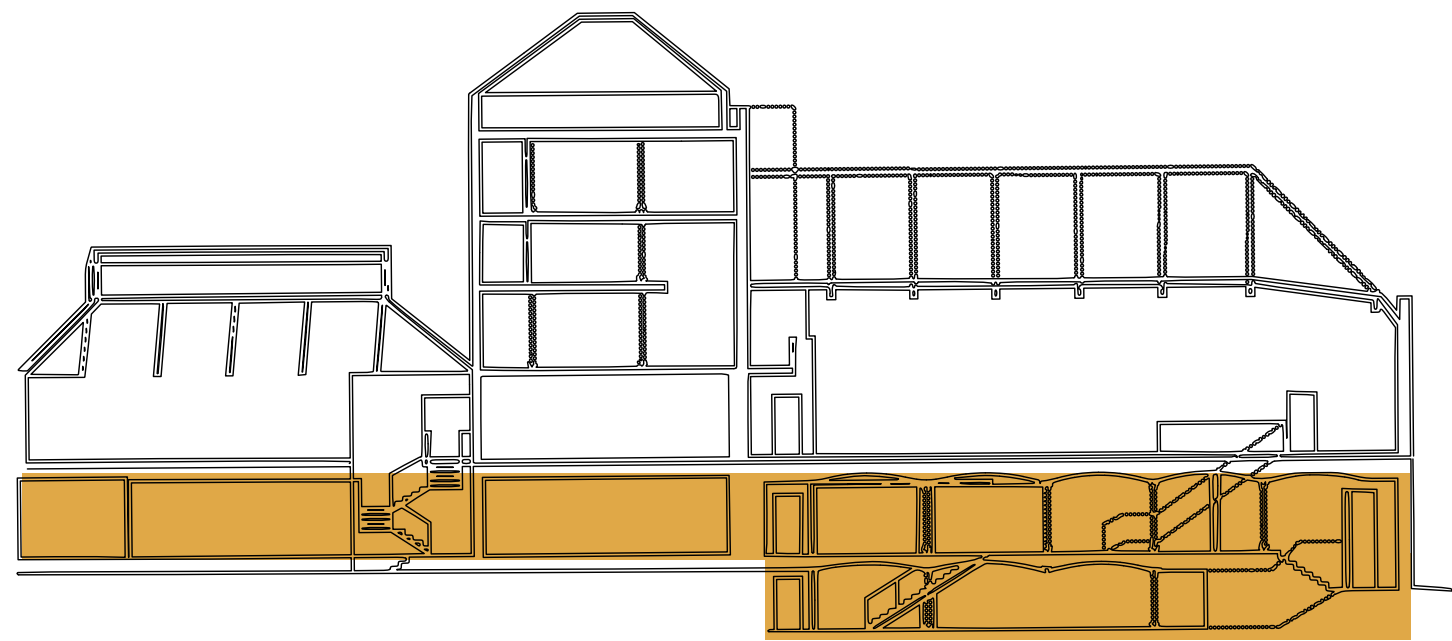
Various space combinations are available, and our team can help you find the ideal layout for your event. Hire prices are based on a 6–11pm slot.

Please don’t hesitate to contact us to discuss your particular needs. We look forward to helping you shape your event and we’re confident that your time at Modern Art Oxford will offer a truly exceptional and unique experience for you and your guests.

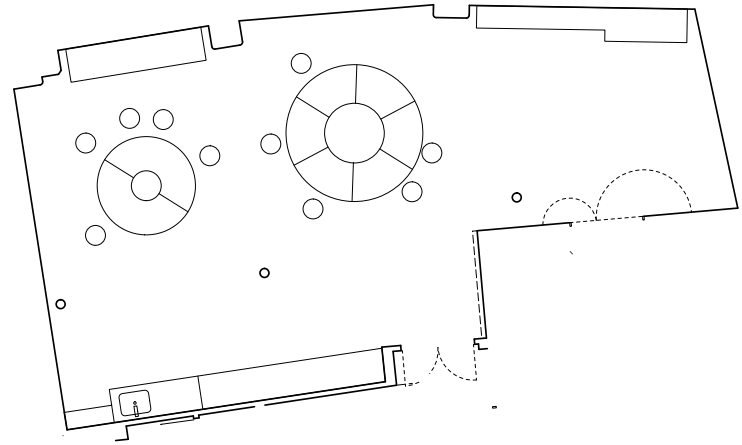
	Standing	Seated Dinner	Seated Theatre	Price
Ground Floor	200	80	100	From £3500 + VAT
Studio	55	15	45	Full day/half day: from £1000 + VAT/ £500 + VAT
Yard	240	100	N/A	From £350 +VAT
Café	100	70	N/A	From £1500 +VAT
All Spaces	340			From £5,500 +VAT



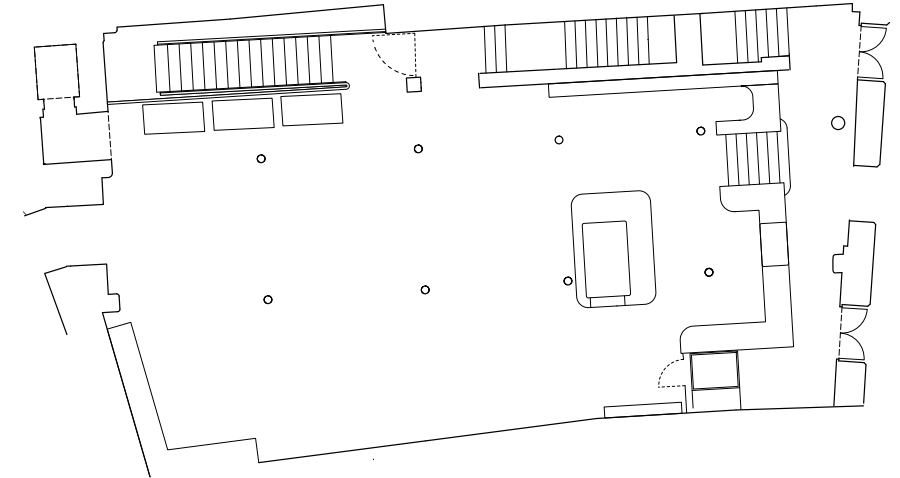
# Our Building



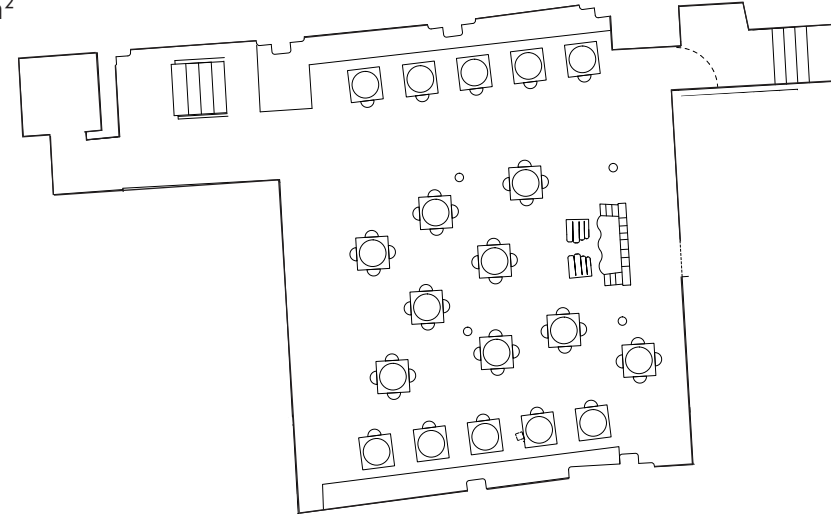
**The Studio**  
85m<sup>2</sup>



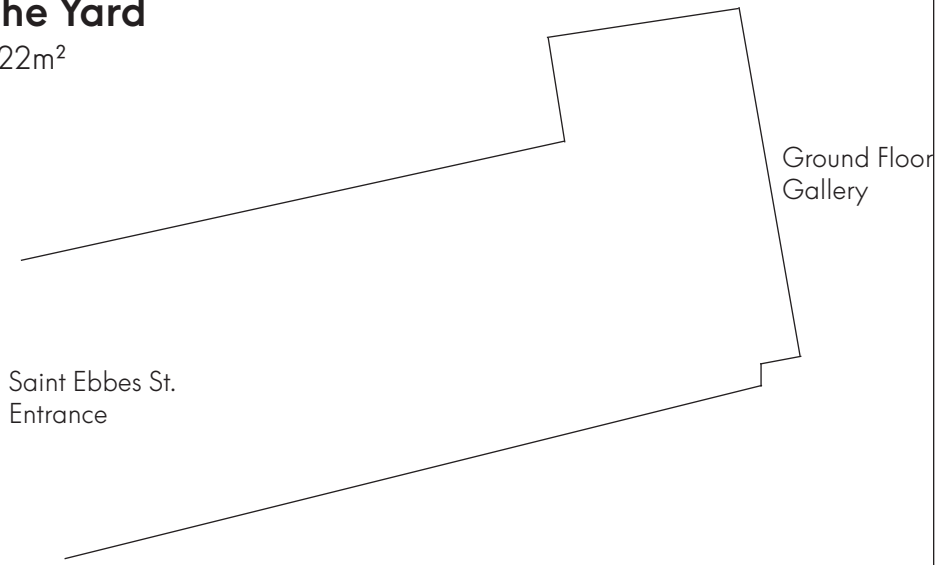
**The Ground Floor**  
113m<sup>2</sup>



**The Cafe**  
99m<sup>2</sup>



**The Yard**  
122m<sup>2</sup>





# Corporate Membership

Become a Corporate Member of Modern Art Oxford today and benefit from free venue hire, increased visibility and a unique association with one of the UK's leading contemporary art spaces. Corporate membership supports our work as a local charity delivering opportunities for creative engagement and self expression to diverse communities from across the city.

“The team at Modern Art Oxford are fantastic to work with, professional, adaptable and creative. They were extremely responsive before the event and during the evening, and their event space was perfect and flexible for what we needed with a warm and welcoming atmosphere. I hope we can work together again soon!”

Eleanor Mathieson, Corporate Hire

To find out more and discuss a package tailored to meet your needs, please contact [development@modernartoxford.org.uk](mailto:development@modernartoxford.org.uk)

## Location

Located in the heart of the city amid Oxford's iconic dreaming spires, Modern Art Oxford is less than a 15-minute walk from the train station and just moments away from the city's famous landmarks, beautiful green spaces, the River Thames and world-renowned University.

Modern Art Oxford  
30 Pembroke Street  
Oxford  
OX1 1BP

### Walking Distances:

Nearest Park and Ride Bus

Stops – 0.1/0.3 miles (1 to 5 minutes)

Oxford Bus Station – 0.4 miles (4 minutes)

Oxford Train Station – 0.6 miles (12 minutes)

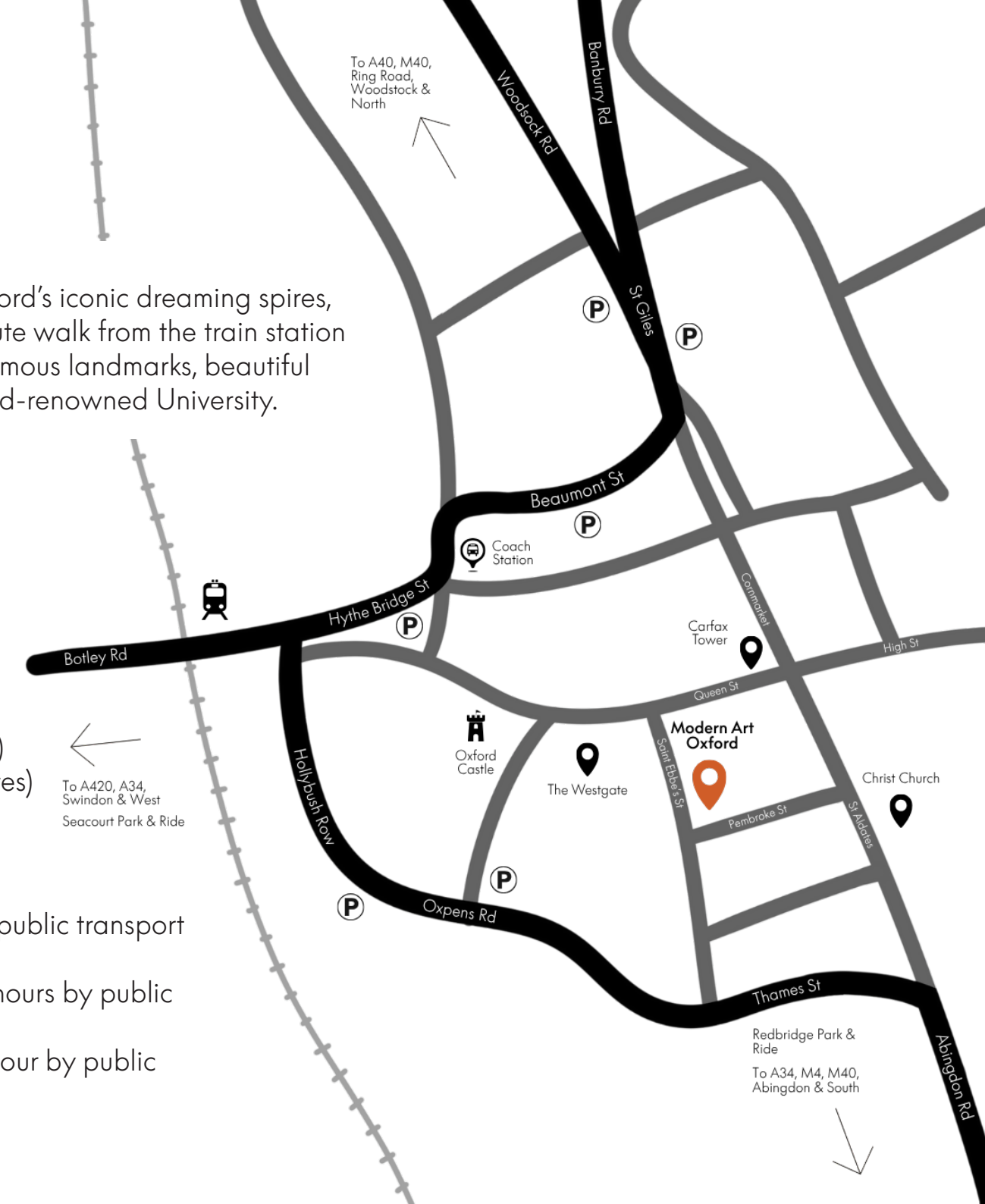
Westgate Parking – (8 minutes)

### Airports:

Heathrow – 1 hour by car or 1.5 hours by public transport (tube and train)

Gatwick – 1 hour 40 minutes by car or 2 hours by public transport (train via London)

London Oxford – 45 minutes by car or 1 hour by public transport (bus)







# Taking bookings for 2025 & 2026

Please contact us to start a conversation or arrange an in-person or virtual tour of our contemporary spaces.

Call: +44 1865 722733

Email: [hires@modernartoxford.org.co.uk](mailto:hires@modernartoxford.org.co.uk)

Website: [www.modernartoxford.org.uk](http://www.modernartoxford.org.uk)

Address: 30 Pembroke Street, Oxford, OX1 1BP

